



KERCKHAERT

**RACE
PRODUCT
GUIDE**

**20
23**

TABLE OF CONTENTS

KERCKHAERT RACE PLATES

HISA Complaint Race Plate Chart	1
Kings Plate Flush (0mm)	2
Kings XT (2mm)	2
Kings Low Toe (4mm)	2
Kings Regular Toe (5.5mm)	2
Kings Extra Sound Clipped Hind Flush Toe (0mm)	3
Safety Trackx Outer Rim	3
Legendary Flush	4
Legendary XT (2mm)	4
Tradition Flush (0mm)	4
Tradition XT (2mm)	4
Tradition Low Toe (4mm)	5
Tradition Regular Toe (5.5mm)	5
Tradition Quarter Horse Toe (8mm)	5
Fast Break Flush (0mm).....	5
Fast Break XT (2mm)	5
Bonded Plates	6
Steel Training	6
Race Plate Measurements	7

KERCKHAERT STANDARDBRED

Outer Rim Front	8
Outer Rim Hind	8
Full and Half Swedge Unclipped	9
Full and Half Swedge Hind Toe Clipped	9
Heavy Full Swedge	10
9/16" & 5/8" Half Round Front	10
TDR (Half Round) Front	11
TNC Flat	11
Standardbred Measurements	12

HORSESHOE NAILS

Liberty and Liberty Cu Copper Coated Horseshoe Nails	13 - 14
Kerckhaert Nail Hole Solution	14
Vector Horseshoe Nails	15

TOOLS

Bellota Rasps, files and Handles	16 - 17
Hoof Knives	18 - 19
Diamond All-In-One Sharpener	19
3D Hoof Pads	20
Grinders and Abrasives	21 - 24
Hoofjack and Accessories	25 - 26
Hoofcare Products	27 - 28

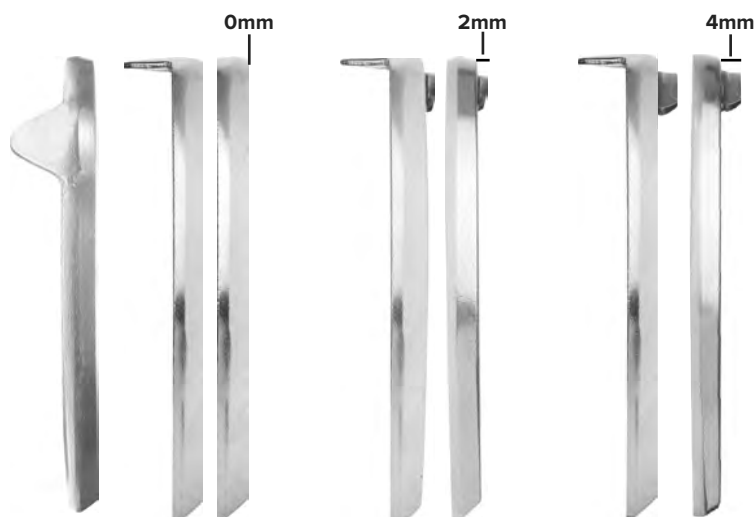
KERCKHAERT HORSESHOES

HISA COMPLIANT SHOES

**FLUSH
(0mm)**

**XT
(2mm)**

**LOW TOE
(4mm)**



KERCKHAERT STYLE*	Dirt	Synthetic	Turf
FLUSH INSERT 0MM	D	S	T
Kings Flush Front	✓	✓	✓
Tradition Flush Front	✓	✓	✓
Legendary Flush Front	✓	✓	✓
Fast Break Flush Front	✓	✓	✓
Kings Flush Hind uc	✓	✓	✓
Tradition Flush Hind uc	✓	✓	✓
Tradition Flush Hind t/c	✓	✓	✓
Kings Extra Sound Flush Hind s/c	✓	✓	✓
XT INSERT 2MM	D	S	T
Kings XT Hind uc	✓		
Tradition XT Hind uc	✓		
Tradition XT Hind t/c	✓		
LOW TOE INSERT 4MM	D	S	T
Kings Low Toe Hind uc	✓		
Tradition Low Toe Hind uc	✓		
Tradition Low Toe Hind t/c	✓		
OUTER RIM 4MM	D	S	T
Safety Trackx Outer Rim Hind t/c	✓		



For the most up-to-date HISA compliant shoe styles, visit www.farrierproducts.com/hisa.

*Shoes in this chart are compliant as of December 2022. The HISA Thoroughbred rules do not apply to Canadian Thoroughbred tracks.

KERCKHAERT HORSESHOES RACE PLATES

Kings Plate Flush Toe (0mm)

This was traditionally a turf shoe but is now a style that will be used on dirt and synthetic surfaces because of HISA rules. The features of this shoe include sole relief, good nail placement with plenty of options, and a heel taper that saves time.



Front or Hind - Unclipped - 2, 3, 4, 5, 6, 7, 8



D S T

Hind - Toe Clipped (Coming 2023)

Kings XT (2mm)

The XT version of the Kings Plate is not allowed on fronts of Thoroughbreds in the US. The hind shoe is compliant for dirt surfaces. Front and Hind are still allowed on Quarter Horses and in Canada. Toe grab is 3/32" (2 mm) above the surface of shoe.



Front - Unclipped - 2, 3, 4, 5, 6, 7, 8

Hind - Unclipped - 4, 5, 6, 7, 8



D

Kings Low Toe (4mm)

The Kings Low Toe hind shoe is compliant for TB racing on dirt only. The fronts are not compliant for TB racing but are still used in QH racing. The toe grab is 3/16" (3.9mm) above the surface of the shoe.

Front - Unclipped - 3, 4, 5, 6, 7

Hind - Unclipped (Coming 2023) - 2, 3, 4, 5, 6, 7, 8



D

Kings Regular Toe (5.5mm)

The Regular Toe is used primarily on dirt tracks for QH racing. It is no longer a compliant shoe for TB racing in the US. The toe grab is 1/4" (5.5mm) above the surface of the shoe.

Front Unclipped - 3, 4, 5, 6

Hind - Unclipped - 2, 3, 4, 5, 6, 7, 8

D = Dirt
S = Synthetic
T = Turf

All Kings Plates are symmetrical and are punched for 3-1/2 Race, 3-1/2 Race XL, 4-1/2 Race or 4-1/2 Slim.

KERCKHAERT HORSESHOES RACE PLATES

Kings Extra Sound Clipped Hind Flush Toe (0mm)

Racing markets in various parts of the world have found clips to be extremely useful in keeping shoes secure. The North American racing market has also been moving in this direction. The side clipped Kings plates are available in a flush toe style with a wide web for additional support. Left and Right Hind Pattern.



Hind - Side Clipped - 4, 5, 6, 7, 8



D S T

Safety Trackx Outer Rim

The rim on the Safety Trackx hind is 4mm, and the toe insert is flush with the rim which makes it compliant on TB dirt tracks. The shoes have a wider outside heel, making them left and right. The Safety Trackx Outer Rim is also a good option for SB racing.



Punched for Liberty 4.5 Race and Carrera Small and Medium nails.

Hind - Toe Clipped - 5, 6, 7, 7.5, 8.5



D

D = Dirt
S = Synthetic
T = Turf

All Kings Plates are symmetrical and are punched for 3-1/2 Race, 3-1/2 Race XL, 4-1/2 Race or 4-1/2 Slim.

CHECK OUT FPD'S WEB SITE!

farrierproducts.com provides many details – including videos, specifications and images on all key products.



KERCKHAERT HORSESHOES

RACE PLATES

Legendary Flush (0mm)

The Legendary is a front only pattern that provides additional thickness for strength and wear. It features wide Sole Relief and beveled heels with toe nail position that allows use of a nail puller. Sand blasted foot surface.



Flush Front - 4, 5, 6, 7, 8

 **D S T**

Legendary XT (2mm)

XT - Front - 4, 5, 6, 7, 8

Tradition Series

An option for shoeing styles and feet that require a narrower pattern than the Kings. The main design differences are the shape, a slight taper in the width from toe to heel, a nail pattern that is spread and punched slightly finer.



Tradition Flush (0mm)



Flush Front - Unclipped - 3, 4, 5, 6, 7, 8

 **D S T**

Flush Hind - Unclipped - 3, 4, 5, 6, 7

 **D S T**

Flush Hind - Toe Clipped - 3, 4, 5, 6, 7

 **D S T**

Tradition XT (2mm)

XT Front - Unclipped - 3, 4, 5, 6, 7, 8

XT Hind - Unclipped - 3, 4, 5, 6

 **D**

XT Hind - Toe Clipped - 4, 5, 6, 7

 **D**

D = Dirt
S = Synthetic
T = Turf

All Tradition Series shoes are symmetrical and are punched for 3-1/2 Race, 3-1/2 Race XL, 4-1/2 Race or 4-1/2 Slim.

KERCKHAERT HORSESHOES

RACE PLATES

Tradition Low Toe (4mm)

LT Front - Unclipped - 4, 5, 6



LT Hind - Unclipped - 3, 4, 5, 6, 7

LT Hind - Toe Clipped - 3, 4, 5, 6, 7

Tradition Regular Toe (5.5mm)

Commonly used on front and hind feet of racing Quarter Horses. Front and hind patterns. Regular Toes are not compliant for TB racing in the US.

RT Hind - Unclipped - 3, 4, 5, 6, 7

RT Hind - Toe Clipped - 3, 4, 5, 6, 7

Tradition Quarter Horse Toe (8mm)

8mm toe grab, used behind on some Thoroughbreds and many racing Quarter Horses.

QH Hind - Unclipped - 3, 4, 5, 6, 7

QH Hind - Toe Clipped - 3, 4, 5, 6

Fast Break Flush (0mm) & Fast Break XT (2mm)

The Fast Break series is available with a flush toe (0mm) insert or XT insert (2mm). Top trainers are finding this to be a dream, especially on younger horses. Less stress on the upper limb, and better hoof condition as well, make it an excellent option on the racetrack.



Flush Front - Unclipped - 4, 5, 6, 7



XT Front - Unclipped - 4, 5, 6, 7

D = Dirt
S = Synthetic
T = Turf

Tradition and Legendary shoes are symmetrical and are punched for 3-1/2 Race, 3-1/2 Race XL, 4-1/2 Race or 4-1/2 Slim.

KERCKHAERT HORSESHOES BONDED PLATES

Bonded Plates

The bonded material on Kerckhaert race plates withstands the punishment of the track. Nail holes are already punched through the material and sole relief is built-in, saving time.



New! Kings Flush Blue Bond - Front - 3, 4, 5, 6, 7



D S T

Kings XT Blue Bond - Front - 3, 4, 5, 6, 7

New! Legendary Flush Bonded - Front - 5, 6, 7



D S T

KERCKHAERT HORSESHOES TRAINING PLATE

Steel Training

Light and Heavy. Whether you're shoeing for the Keeneland select sale or putting the first shoes on the "runner" down the road, the Kings DR 15x7 or Kings DR 16x8 will fit the bill. The shoe shapes, combined with excellent nail placement and fit, make shoeing the yearling or two year old a lot easier.



Front - Kings DR 15x7 - Unclipped - 25, 26, 27, 28, 29, 30

Front - Kings DR 16x8 - Unclipped - 27, 28, 29, 30, 32

Hind - Kings DR 16x8 - Unclipped - 26, 27, 28, 29, 30

	24	25	26	27	28	29	30	32
Race Size »	0	1	2	3	4	5	6	7

Steel Training shoes are symmetrical and are punched for 3-1/2 Race, 3-1/2 Race XL, 4-1/2 Race or 4-1/2 Slim.

KERCKHAERT HORSESHOES

RACE PLATE MEASUREMENTS

	Width Inches	Length Inches	FIA Inches
--	-----------------	------------------	---------------

KINGS RACE PLATES

Front

2	4-3/8	4-1/8	11-3/8
3	4-5/8	4-3/8	11-3/4
4	4-7/8	4-1/2	12-1/2
5	5	4-5/8	12-3/4
6	5-1/4	4-7/8	13-1/2
7	5-3/8	5	13-7/8
8	5-5/8	5-1/2	15
9	5-1/2	5-3/4	15-1/4

KINGS, TRADITION & SYNERGY RACE PLATES

Hind

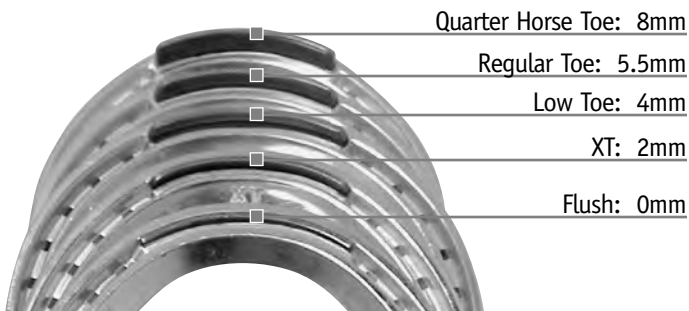
2	4-1/4	4-1/8	11-1/8
3	4-1/2	4-3/8	11-5/8
4	4-5/8	4-1/2	12
5	4-3/4	4-3/4	12-5/8
6	5	5	13-1/4
7	5-1/4	5-1/8	13-7/8
8	5-1/2	5-1/4	14-1/4

TRADITION, SYNERGY & LEGENDARY

Front

3	4-1/2	4-3/8	11-3/4
4	4-5/8	4-1/2	12-1/4
5	4-3/4	4-3/4	12-5/8
6	5	4-7/8	13-1/4
7	5-1/8	5-1/8	14
8	5-5/8	5-1/2	15-1/8

Toe Grab Measurements



KERCKHAERT HORSESHOES

STANDARD BRED



Outer Rim Front

This shape is referred to as the Standardbred because of its narrower, longer shape that is very typical of the Standardbred front foot. This aluminum shoe is proving to be a tough, well wearing shoe for Standardbred surfaces, but can also be used successfully with Thoroughbreds. The punching is slightly deeper to help get good nailing. Available unclipped or toe clipped with a 2mm toe grab. **Shoes are symmetrical.**

Punched for 4-1/2 Race or 4-1/2 Slim.

Unclipped - 4, 5, 6, 7, 8, 9

Toe Clipped - 4, 5, 6, 7, 8, 9, 10



Outer Rim Hind

While Kerckhaert's Outer Rim Hind is an ideal shape for Standardbreds. It has a strong toe clip, unique surface finish with sole relief and a 2mm toe grab. **Shoes are symmetrical.**

Punched for 4-1/2 Race or 4-1/2 Slim.

Toe Clipped - 4, 5, 6, 7, 8

KERCKHAERT HORSESHOES STANDARD BRED



Full & Half Swedge Unclipped

For years the market had no choice in the Standardbred shoe market. The introduction of the Kerckhaert Swedges, made with a tough, durable steel is a dream come true for many. The shapes of the shoes are a significant improvement and the careful consideration seen in the nail placement and support in the heels are noticeable features.

Punched for 4-1/2 Race, 4-1/2 Slim or 5 Race.

Front - Full Swedge - 1, 1.5, 2, 2.5, 3, 3.5, 4

Hind - Half Swedge - 1, 1.5, 2, 2.5, 3, 3.5, 4



Full & Half Swedge Hind Toe Clipped

The clipped version of the Kerckhaert Full and Half Swedge offer additional security for the shoeing cycle. The strong toe clip of these shoes will help avoid the problems of shoes sliding back while in performance or in the stall. The support in the heel area, with a slightly wider lateral heel will increase the chances of keeping your horses sound. Excellent shape minimizes time spent on fitting shoes.

Punched for 4-1/2 Race, 4-1/2 Slim or 5 Race.

Full Swedge Hind Toe Clipped - 1, 1.5, 2, 2.5, 3, 3.5, 4

Half Swedge Hind Toe Clipped - 1.5, 2, 2.5, 3, 3.5, 4

KERCKHAERT HORSESHOES

STANDARDTBRED



Heavy Full Swedge Front

Kerckhaert has now produced a full swedge front with slightly wider and thicker dimensions than the Regular Swedge.

Made with a tough, durable steel, this shoe offers a better base of support for the larger Standardbreds. Unclipped only.

Punched for 4-1/2 Race, 4-1/2 Slim or 5 Race.

Front - Unclipped - 3, 4



9/16" & 5/8" Half Round Front

The Standardbred market has long relied on the half round style to train and race. The Kerckhaert design gives better heel support and a much more realistic nail pattern to help with the performance of the horse.

The shape of the shoes minimizes the amount of work needed to get a good fit. High quality steel provides excellent wear and support for the foot. **Shoes are symmetrical.**

Punched for 4-1/2 Race, 4-1/2 Slim or 5 Race.

9/16" Unclipped - 1.5, 2, 2.5, 3, 3.5, 4

5/8" Unclipped - 2, 3, 4

KERCKHAERT HORSESHOES

STANDARD BRED



TDR (Half Round) Front

The TDR is creased, giving good traction as well as the breakover it's famous for. There are three choices of stock size - 1/2", 5/8" & 3/4".

1/2" (14x6) - Unclipped - 00, 0, 1, 2

5/8" (16x8) - Unclipped - 000, 00, 0, 1, 2

3/4" (18x9) - Unclipped - 00, 0, 1, 2



TNC Flat

The Kerckhaert TNC series has been used for many years in the trotting market in Europe.

Made with a very tough material, this flat shoe has creases that are easily fit and used for the typical Standardbred race horse.

This series helps with the challenge of gaiting the young horse, as well as fitting the needs of aged horses.

Hind (14x5) - Unclipped - 000, 00, 0, 1, 2

KERCKHAERT HORSESHOES

STANDARD BRED MEASUREMENTS

	Width Inches	Length Inches	FIA Inches
--	-----------------	------------------	---------------

OUTER RIM

Front

4	4-1/2	4-1/2	12-1/2
5	4-3/4	4-3/4	12-3/4
6	5	5	13-3/8
7	5-1/8	5-1/8	13-7/8
8	5-1/4	5-3/8	14-1/2
9	5-1/2	5-7/8	15-1/2
10	5-9/16	6-3/16	16

Hind

4	4-1/4	4-1/4	11-7/8
5	4-1/2	4-1/2	12-1/2
6	4-7/8	5-1/8	13-1/2
7	5	5-1/2	14-3/8
8	5-1/4	5-3/4	15-1/8

FULL & HALF SWEDGE

1	4	4-1/2	11-7/8
1.5	4-1/4	4-3/4	12-1/2
2	4-3/8	5	13
2.5	4-5/8	5-1/8	13-1/2
3	4-7/8	5-3/8	14-1/8
3.5	5	5-1/2	14-5/8
4	5-1/8	5-3/4	15
6	5-1/4	6-3/4	17-3/8

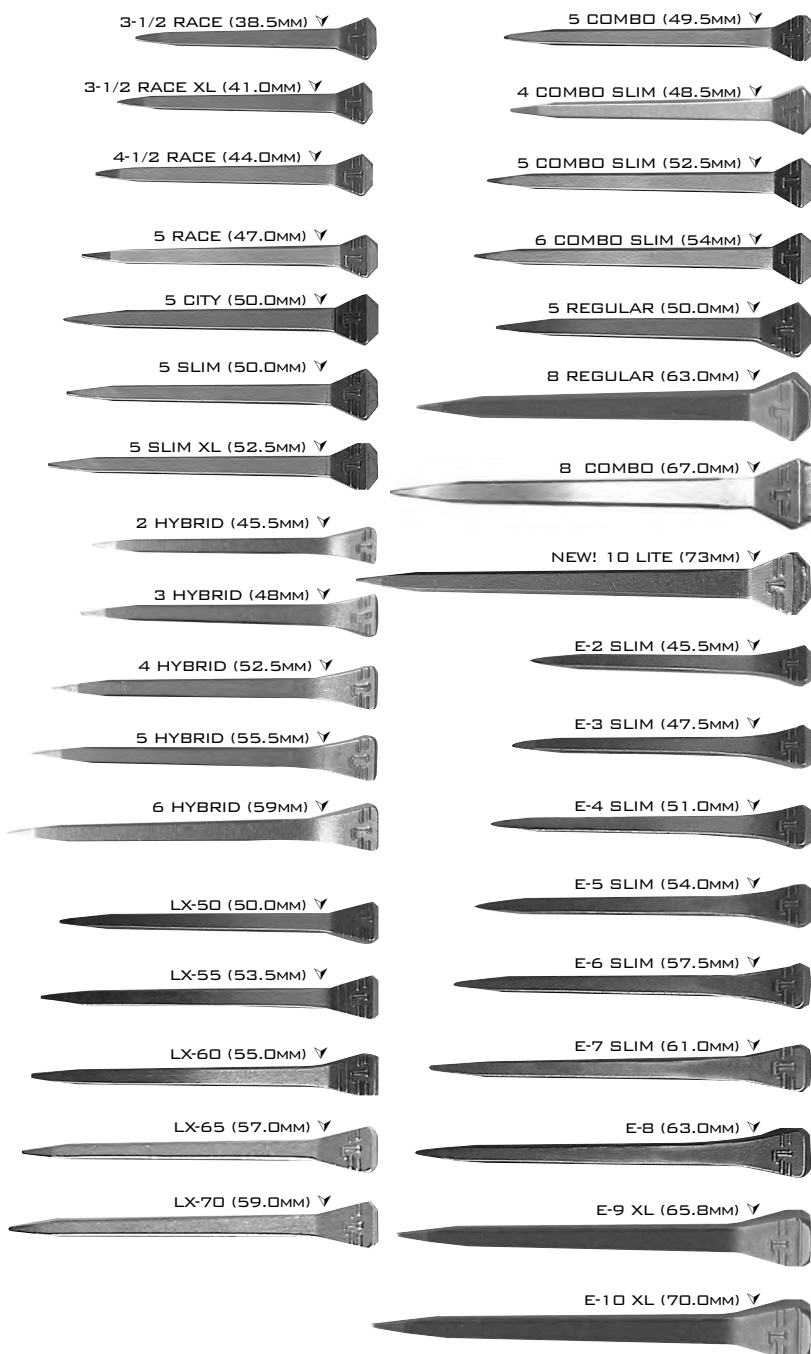
9/16" & 5/8" HALF ROUND

1.5	4-3/8	4-3/4	12-5/8
2	4-1/2	5	13-1/8
2.5	4-5/8	5-1/4	13-3/4
3	4-7/8	5-1/2	14-1/8
3.5	5	5-5/8	14-5/8
4	5-1/8	5-7/8	15

LIBERTY HORSESHOE NAILS

LIBERTY A NAIL EVOLUTION

High quality nail designed by Kerckhaert Horseshoe Company with precise and consistent specifications that provide consistent driving, excellent points and outstanding finish. Nails not shown actual size.



LIBERTY HORSESHOE NAILS

Liberty Cu Nails with Cu Shield Technology

In addition to all of the same great features of the regular Liberty nail Liberty Cu horseshoe nails include Cu Shield Technology. This technology provides more protection than traditional horseshoe nails. Hoof wall, white line and sole are stronger and healthier when Liberty Cu nails are used on a daily basis. The Cu Shield Technology is unique to Kerckhaert and Liberty Cu horseshoe nails.



The Full Line of Liberty Cu Horseshoe Nails with Cu Shield Technology:

- Carrera Race Cu Small, Medium and Long
- Cu 4, 5 and 6 Combo Slim
- Cu 5 Slim and 5 Slim XL
- Cu 5 City
- Cu LX-50, LX-55, LX-60, LX-65, LX-70
- Cu E-2 through E-7 Slim
- Cu Hybrid 2, 3, 4, 5 and 6
- Cu Race 3-1/2, 3-1/2 XL, 4-1/2 and 5



Cu Carrera Nails

Slight extra "neck" fits more securely in the punching, a slim shank and only a minimal amount of head above the shoe surface. Medium size works well with the Kerckhaert Pride series, Aluminum Triumph or Century Series.



Cu Hybrid Nails

The bevel angle on the trademark face of the nail allows the nail to lock in better in all types of shoes punched for E-Heads, including concave. The slightly larger specifications of the shank immediately under the head will provide additional strength and a better fit in the pritcheling of the shoe.

Kerckhaert Nail Hole Solution

This hoof care product was formulated specifically to treat old nail holes. Use the Kerckhaert Nail Hole Solution in combination with Liberty Copper Coated Cu horseshoe nails for added protection and outstanding results. When used regularly, Kerckhaert Nail Hole Solution forms a permanent barrier between the environment and healthy hoof tissue so old nail holes stay clean. Available in 4 oz. size.



VECTOR HORSESHOE NAILS

A wide range of nails produced for superior quality and performance. Vector nails are packaged in durable plastic containers with color coded labels indicating the different nail styles.

All boxes contain 250 nails. 5 Race, 5 City and 5 Slim are also available in boxes containing 100 nails. Some nail sizes are available in Farrier Packs - containing 1,250 nails.



E-6 SLIM ▼



E-3 SLIM ▼



VX-60 ▼



6 CITY ▼



5 CITY ▼



5 SLIM ▼



5 SPECIAL ▼



5 REGULAR HEAD ▼



5 RACE ▼



4-1/2 RACE ▼



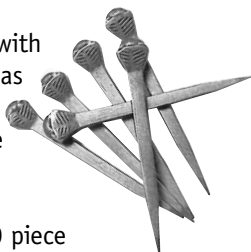
3-1/2 RACE XS ▼



Vector V-Trak

The consistency of the hard facing combined with the high tensile strength of the Vector nails has produced a traction product that has met the demands of the professional farrier. Prices are very competitive.

Available in sizes 5 and 6 City. Packed in 100 piece plastic boxes.



BELLOTA RASPS

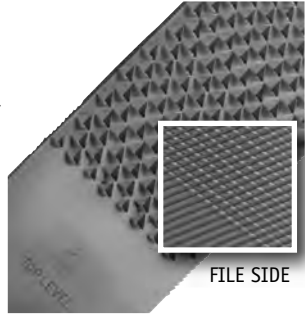
Bellota Rasps, Files and Tools



The Bellota brand has been a leader in the North American market since the early 80's. We are pleased to offer these products through our farrierproducts™ dealers.

Top Level Rasp (14")

The Bellota Top Level rasp is 12% wider (2" wide) and 10% thinner than regular rasps for perfect leveling balance and control. Aggressive rasp side (8 teeth/row) for easy cut, ideal for trimming and intermediate file side for excellent and efficient finish. Same weight as regular rasp models.

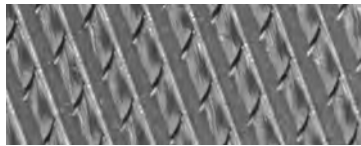
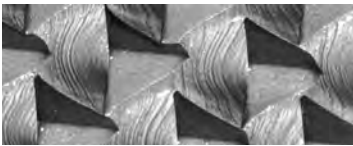
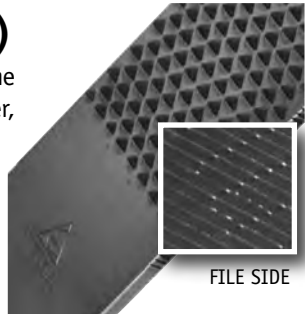


Top Level Long Rasp (17")

A longer version of the Top Level, ideal for larger hooves.

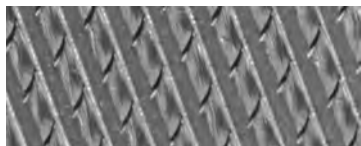
Prime Level Rasp (14")

The Bellota Prime Level complements the Top Level rasp, providing the same wider, thinner model and aggressive rasp side with a chip breaker file side. Same weight as regular rasp models.



Razor+ Rasp (14")

Most aggressive rasp cut requires only a light stroke in the early stages of using the rasp. Coarse file side. High-grade Bellota steel provides extra durability.



Top Sharp Rasp (14")

Very aggressive rasp cut and intermediate file cut lets you get in and out with maximum results.

BELLOTA RASPS AND FILES



Classic Rasp (14")

The smooth cut of the Classic file side is the best choice for a smooth finish. Very aggressive rasp cut for maximum results.



Raptor+ Rasp (14")

The extra width of this rasp – 1/2" wider than other Bellota Rasps – provides a greater cutting surface. The 14" Raptor features a most aggressive cut on the rasp side and coarse cut on the file side. High-grade Bellota steel provides extra durability.

Big Raptor+ Rasp (17")

A longer version of the Raptor+, ideal for larger hooves.

Mini Rasp

Like the Top Sharp, the very aggressive design of the file side lets you get in and out with maximum results - but has an overall length of 13" - making it very handy for working on foals, ponies and miniature horses. Handle is included.



6" and 8" Knife Files

Mill bastard with 2 round edges. Each file is checked, one by one, to ensure quality and provide perfect filing. All Bellota files are protected by a rust proofing treatment.



A1

A4

B1

B2

B4

Bellota Ergonomic File Handles

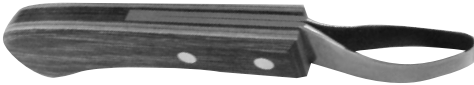
Ergonomic material. A1 fits the 14" files and rasps of all brands. A4 fits the 8" Flat File, commonly used for knife sharpening. B1 fits the Bellota 12" Triangle file. B2 fits the 12" Round file and 6" Flat File. B4 is best fit for Bellota 8" Round Chainsaw files.

HOOF KNIVES



Bloom Forge Regular & Offset Blade

- Made of knife-grade, hardened carbon steel
- Unique diamond wood handle
- Regular Right handed only
- Right and left handed offset
- Blade length: 2-1/2"
- Handle length: 5-1/2"



Bloom Forge Loop

- Made of knife-grade, hardened carbon steel
- Unique diamond wood handle
- Blade length: 2-1/4"
- Handle length: 5-1/2"



Bloom Forge Special Knife

- Made of knife-grade, hardened carbon steel
- Curved blade
- Narrower and longer wooden handle
- Right handed only
- Blade length: 2-1/2"
- Handle length: 5-7/8"



fp™ Wide & Narrow Blade

- Made in Germany
- Made of high quality steel blade
- Right or left handed
- Blade length: 2-1/2"
- Handle length: 5-7/8"



Forest Wide & Narrow Blade

- Made of high quality steel blade
- Right or left handed
- Blade length: 2-3/4"
- Handle Length: 5-1/4"

DIAMOND HOOF KNIVES

Diamond® Hoof Knives

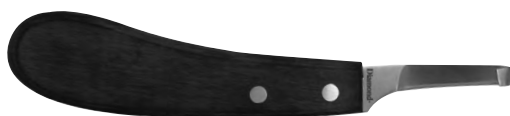
- Removes excess sole and trims the frog
- New stainless steel blade maintains sharp edge for clean, fast cuts
- Hardwood handle
- Comfortable grip
- Available in narrow, wide and drop blade for left or right hand, Double Edge and Loop Hoof Knife



DROP BLADE



LOOP KNIFE



NARROW HOOF KNIFE



WIDE HOOF KNIFE



DOUBLE EDGE
HOOF KNIFE

Diamond® All-In-One Sharpener

- Multi-position tapered sharpening rod for curved blades
- Removable coarse & fine diamond sharpening plates
- Crossed carbide blade set for sharpening straight blades and crossed ceramic rod set for finishing
- Ergonomically shaped, foldable design
- Leather strop for polishing and razor sharp finish
- 7" (Closed)
- Even includes a bottle opener!



HOOF PADS

3D Eclipse Pad

Lightweight pad for racing and speed, where weight may be a concern. This pad is designed to stop the frog from descending to the ground through peripheral loading of the hoof wall that results in sore heels and possible corns.



3D Eclipse Flat Pad - 3, 4, 5

3D Half Mesh Flat Pad

Designed to stop the frog from descending to the ground through peripheral loading of the hoof wall that results in sore heels and possible corns. Must be used in conjunction with an impression material, in a controlled pasture and riding environment that has no stones to puncture the exposed sole area.



3D Half Mesh Pad - 3, 4, 5, 6

3D Half Mesh Degree Pad

Wedge version of the Half Mesh Pad, used to re-align the hoof pastern axis angle. Benefits horses that need bony column support, such as laminitic horses, helping the frog share a portion of and reduce the load of other areas of the hoof. These pads maintain the position of the frog relative to other structures of the hoof.



3D Half Mesh Degree Pad - 3, 4, 5, 6

3D Half Mesh Narrow Pads

Narrow version of the 3D Hoofcare Half Mesh Flat and Half Mesh Degree Pads. The narrower shape design will work well for front or hind feet. The narrow design pads are made in the U.S.



3D Half Mesh Flat Narrow Pad - 2, 3, 4

3D Half Mesh Degree Narrow Pad - 2, 3, 4

3D Full Mesh Pad

Designed for pasture or riding environments for maximum protection and support. Various degrees help re-align the hoof pastern axis angle. Stops the frog from descending to the ground through peripheral loading of the hoof wall that results in sore heels and possible corns. Must be used in conjunction with an impression material.



3D Full Mesh Pad - 4, 5, 6

GRINDERS AND ABRASIVES

Baldor 1/4 HP Buffer (Red)

The Baldor buffer has 1/2" shafts and operates at 1800 rpm (same as the original). The shafts have been extended by 1" on each end to make it easier to keep knives away from the housing. It is painted red, to avoid confusing it with the 1/2hp grinder.



Baldor 1/2 HP Two Speed Grinder

This two-speed unit can be run at 1800rpm for sharpening knives, or the normal 3600rpm for grinding shoes and other items. This grinder has a 5/8" shaft, which is the same as the BG12 unit. The toggle switch shows a fast option, 3600rpm or slow option, 1800rpm.



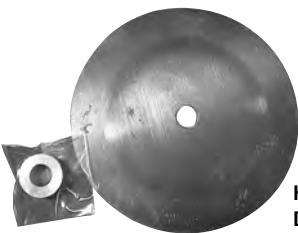
Baldor 1/2 HP and 3/4 HP Grinders

1/2 HP Grinder shown with 10" and 6" expander wheels and guards operates at 3600rpm and has a 5/8" shaft. 3/4 HP Grinder shaft is 5/8" and approximately 2-1/2" long. Powerful unit for shop or mobile rig. 3600 rpm, 120V Made in USA.



Attachments for 1/2 HP & 3/4 HP Grinders

- 7" Aluminum Heel Finish Disc with Spacer
- 6" and 10" Expander Wheel with Guard



Heel Finish Disc



6" Expander Wheel with Guard

FootPro 1/2" Shaft Extension

Extends length of buffer shaft to move work away from motor. Available in left (left hand thread) or right (right hand side). Fits 1/2" Shaft and hex wrench included.



GRINDERS AND ABRASIVES

FootPro™ 2"x36" & 2"x48" Grinding Attachments

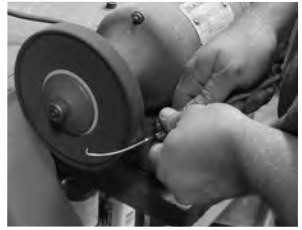
This attachment uses an 8" contact wheel. The 8" wheel produces a significantly higher belt speed than most grinder attachments, in the same way the expander wheels do, and fit any 1/2 hp or larger grinder with a shaft at least 2-1/2" long and 5/8" in diameter. Also available in a left hand version.

A wide range of FootPro™ belts fit this unit. Baldor 1/2hp or 3/4hp grinder 3600rpm motor is recommended.



Knife Sharpening Products

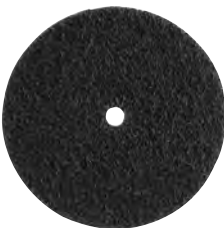
- 6" Buffing/Sharpening Wheel
- 6" Felt Wheel with Groove
- Buffing Compounds
- 6" Cotton Wheel
- 6" and 8" Sisal Wheel
- 8" Muslin Wheel
- 6" Blending Wheel - Used for the initial sharpening of hoof knives and blending the edge of the knife blade.
- FootPro™ 6" Economy Wheel



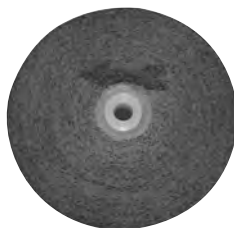
Sisal Wheel



Cotton Wheel



FootPro™ 6"
Economy Wheel



Blending Wheel

GRINDERS AND ABRASIVES

FootPro™ Double Sided Bench Grinder Disc

Excellent for cleaning up welds, safeing edges and finishing heels. The design of this double sided disc makes it ideal for both grinding and surface finishing steel and aluminum.

Available in 40 and 60 grit ceramic and 80 and 120 grit zirconia.



Abrasive Belts and Discs

We offer a wide range of abrasive belts and discs specifically selected for the farrier's use. VSM and 3M are the high quality brand names that we feature.

- Blue Zirconia - 2x36", 2x48", 6" & 10" Expander Wheels
- Ceramic - 2x36", 2x48", 6" & 10" Expander Wheels
- Aluminum Oxide - 10" Expander Wheel
- 4-1/2" and 7" Flap Discs
- 3M Cubitron - 2x36", 2x48", 10" Expander Wheels

3M Cubitron Belt



Watch a Video on FPD's YouTube Channel

FootPro™ Double Sided Bench Grinder Disc

Watch the new FootPro Double sided Bench Grinder disc in action.

<https://youtu.be/RjgPHSttY8Q>



GRINDERS AND ABRASIVES



Hoof Buffer Attachment

Attaches to cordless or electric drill. 2" x 4" sleeves in 60, 80 and 100 Grit.

Hoof Buffer Sleeve 60, 80 and 100 Grit

Aluminum Oxide (Brown) sleeves for the Hoof Buffer Attachment. 60 grit, coarsest grit available. Use for very rough walls or draft horses. 80 grit, medium grit. 100 grit, finest grit. 10 per pack.



FootPro Mini Air Pump

This compact design pump works very well with the FootPro™ Hoof Buffer.



FootPro™ Dual Grit Belts

The Dual Grit belts for the FootPro Sandbox tools have two grits instead of one. Using two different Zirconia coatings, it's easy to see the difference at a glance; one half of the belt length is finer than the other half. 40/80 grit and 80/120 grit are available for all of the Sandbox tools.



Natural Rubber Belt Cleaning Stick

- Used to clean and extend the life of grinding belts
- Especially useful before and after grinding aluminum
- Size: 6"x1.5"x1.5"

HOOFJACK®

HOOF STANDS

Hoofjack Complete

Hoofjack Complete sets include Base with Accessories (Post with cap, Post with cradle, 2 Magnets and screws and Tension knob). Some assembly required. Complete sets available in Mini, Medium and Standard sizes and are only available with the green base. **Bases, posts, cradles and parts also sold separately.**

- Allows the horse to stand in an anatomically correct and comfortable position
- Pull a shoe, trim, rasp, and nail on a new shoe without ever putting the hoof between your knees or supporting the horse with your body
- Supports the hoof for daily care, treatment, bandaging, and more
- Use the straight post for clipping or applying hoof polish
- The cradle and straight post can be used on both the front and hind feet
- Base is made of linear polyethylene

STANDARD BASE WITH POST & CRADLE

Accommodates a pony up to a small draft or draft cross (hooves up to a size 7).

- Base Height - 12.5"
- Post Height Adjustable from 14.5" - 24.5"
- Cradle Height Adjustable from 14.5" - 24.5"
- Diameter - 18"



MEDIUM BASE WITH POST & CRADLE

Designed specifically for users under 5'10" (or a floor to bottom of kneecap distance of less than 18") when using the cradle on the front hoof. It will accommodate a pony up to a small draft or draft cross (hooves up to a size 7 shoe or less than 7 3/4" wide). Same base diameter as the Standard Hoofjack but is 3" shorter.

- Base Height - 9.25"
- Post Height Adjustable from 11" - 18"
- Cradle Height Adjustable from 13" - 20"
- Diameter - 18"



MINI BASE WITH POST & CRADLE

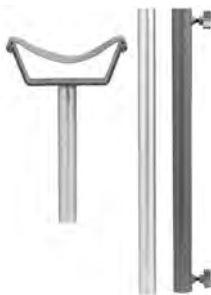
Developed to be the perfect height and width to support the hooves of miniature horses. Use for daily care, trimming, bandaging, polishing and more.

- Base Height - 7.5"
- Post Height Adjustable from 9.5" - 14"
- Cradle Height Adjustable from 9.5" - 14"
- Diameter - 12.5"



Hoofjack Dental Attachment

The Hoofjack Dental attachment consists of a Draft cradle, 2' post, and 2' coupler. In a standard base the attachment will adjust from 3'2" to 5'6". In a medium base the attachment will adjust from 2'11" to 5'3". Base not included. Some assembly required.



Hoofjack Dental Attachment - Articulated

The Hoofjack Dental Attachment - Articulated, consists of an articulated cradle, 2' post, and 2' coupler. Cradle articulates from 0 degrees to 11 degrees and 22 degrees to accommodate precise positioning of the head during procedures. When used in a standard base the attachment will adjust from 3'2" to 5'6". When used in a medium base the attachment adjusts from 2'11" to 5'3". Other size options available upon request. Base not included. Some assembly required.



Draft Hoofjack Post & Cradle

Designed to fit in the Hoofjack Standard Base. Draft cradle and post are intended for hooves larger than a size 7 shoe or if your horse is unshod larger than 7 3/4 " at the widest part of the hoof. Set includes one post and one cradle. Post Height Adjustable from 14.5" - 24.5". Cradle Height Adjustable from 15.5" - 25".



Hoofjack Mini Cradle with Standard Post

The advantage of the mini cradle for normal hoof sizes is, when rasping or nailing, the cradle is not in the way; while still providing excellent support for the hoof. 11" post allows for taller adjustment. Cradle Height Adjustable from 14.5" - 24.5".



Hoofjack Hot Fit Plate

Aluminum plate designed to fit one section of the Hoofjack base. This plate allows farriers hot-fitting to have a place to set the hot shoe while working on the hoof. The plate is already drilled and screws are provided.



Hoofjack Table

12"x12" aluminum table fits in any Hoofjack base. It's designed to keep items like Vettec and other hoof repair or glue-on products off the floor and within reach when working under the horse.



HOOF CARE PRODUCTS

FootPro™ DIM Impression Material

FootPro™ DIM Impression Material is a non-toxic, non-allergenic, dental grade silicone that is hand mixed to a moldable consistency and applied to the bottom of the equine foot with a pad to provide either a soft cushion (DIM20), or a firm supportive material (DIM40) when needed. Each box contains a total of either 4 lbs. or 2 lbs. (Equal Parts Catalyst and Base). Components are not sold separately.



FootPro™ CS PLUS®

The FootPro™ CS PLUS® Hoof Treatment is a clay based hoof treatment with copper sulfate, iodine, venice turpentine and tea tree oil. The product is used to treat hoof separations or surface pockets in the sole and frog where bacteria may be present. Packed in a convenient 10 oz. jar, the material is easily spread and leaves no stain on your fingers.



Allen's Blue Powder

A medicated thrush preventative, developed by farrier Todd Allen. The active ingredient is copper sulfate and the powder is sprinkled on the frog and sole area of the foot as a preventative measure. Also used as a treatment for thrush. 9 oz. size.



Frog Dressing

- Gel formula does not run when applied
- Reduces bacteria and fungi without harming the surrounding tissue
- Bonds to the hoof protein to form a barrier between thrush and healthy tissue
- Blue color shows where product has been applied
- Flexible tip applicator for better placement of treatment



Hoof Defender (Hoof Protectant)

- Reduces bacteria and fungi on the hoof wall, sole and frog
- Boosts the natural resistance of the hoof against diseases that are caused by bacteria and fungi
- Can be applied to the coronary band
- Built-in applicator



HOOF CARE PRODUCTS

Adhere 210cc

Multipurpose, fast-setting urethane adhesive designed to bond steel, aluminum and urethane shoes to the hoof and to fabricate large and small hoof wall repairs. It sets in 60 seconds, is weight bearing after 3.5 minutes and is fully cured in 6 minutes.



Equi-Pak Clear 210cc

Liquid urethane that sets in 30 seconds and is used as a pour-in pad to provide comfort, protection and therapeutic support. It bonds directly to the sole and frog and can be used by itself as an instant pad, or as a packing underneath a pad.



Equi-Pak CS 210cc

Copper sulfate infused liquid urethane that sets in 60 seconds and is used as a pour-in pad to provide comfort, protection and therapeutic support for equine feet. It bonds directly to the sole and frog and can be used by itself as an instant pad, or as a packing underneath a pad.



Equi-Pak Soft 210cc

Liquid urethane that sets in 40 seconds and is dispensed under a pad to provide comfort, protection and therapeutic support. It bonds directly to the sole, frog and pad to keep out debris.



Sil-Pak 210cc

Non-bonding, skin-safe silicone packing material dispensed under a pad to seal, protect and cushion the equine foot. It totally fills and seals all void areas and prevents debris migration. Sil-Pak applications are weight bearing in 2 minutes.



Sole-Guard 210cc

Black liquid urethane that can be used in a variety of applications to produce an extremely durable pad on shod and unshod equine feet. It sets in 30 seconds, bonds to the sole and frog and can be used as a thin protective pad, or a thicker, supportive pad.



Super Fast 210cc

Fast setting, highly durable urethane formula that is ideal for making custom shoes directly on the hoof, as well as medial, lateral and toe extensions on foals. It sets in 30 seconds and is weight bearing in 2.5 minutes.



Vettec XL Dispensing Gun

The Vettec XL Dispensing Gun for 210cc cartridges is a side mount dispenser that works very smoothly.



Vettec 210cc Dual Speed Dispenser

Vettec now has a 210cc Dispenser with a 2-speed feature. One setting of the knob is the same as the normal dispenser and the second setting dispenses at a much faster rate, putting out more material with less pumps.

