



MARK YOUR CALENDAR *for the*

MEADER SUPPLY FARRIER CLINIC

APRIL 26, 2025

WITH AUSTIN EDENS, CJF

SPONSORED BY



ABOUT THE CLINICIAN **AUSTIN EDENS, CJF**

Austin Edens apprenticed with his father, and after completing his apprenticeship, he spent a summer in Great Britain with the AFA exchange program, working with farriers across England and Scotland. In 2000, Austin was awarded Rookie of the Year at the World Championship Blacksmith Competition in Calgary. A member of the American Farriers Team for four years (2001-2004), he competes at many farrier contests throughout the world. He was National High Point at the AFA Convention for four consecutive years (2001-2004). In 2003, Austin won the World Championship Blacksmith Competition. After stepping back from high-level competition, Austin is a judge and clinician, providing clinics in Japan, North and South America and Europe. He lives in the Texas hill country where he shoes performance horses, designs and manufactures hoofcare products, and teaches farrier fundamentals to others.



CLINIC DETAILS

APRIL 26, 2025
RSVP BY APRIL 18 • (603) 332-3032

Registration at 8:00 a.m.
Clinic 9:00 a.m. - 4:00 p.m.
Lunch will be provided.

TOPICS

Maintaining Structure and Vertical Depth
Center-of-Stock Fit
Treating and Rebuilding the Foot with WLD
Center of Gravity in Relation to
Mediolateral Balance

CLINIC DAY SPECIAL

10% discount cash or
8% discount credit card.

PRE-ORDER DISCOUNT

12% discount cash or 10% discount credit
card if placed by April 1 and
paid at time order is placed.

CLINIC LOCATION

MEADER SUPPLY

23 Meaderboro Rd
Rochester, NH 03867
www.meadersupply.com
(603) 332-3032

*Look for the Meader's Heritage Farm Sign
and White Horse Fences.*

WHERE TO STAY

COMFORT INN & SUITES

10 Hotel Drive
Dover, NH 03820
603-750-7507

HOLIDAY INN EXPRESS

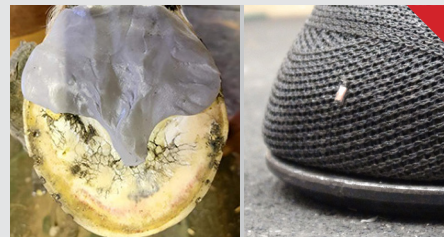
77 Farmington Road
Rochester, NH 03867
603-994-1175

Featured Products



PLEXUS CAUDAL SUPPORT PADS

Made in the U.S., Austin Edens' Plexus Pads feature a patent pending, common sense design. The shape and design of Plexus Open Toe Caudal Support pads allow for easy fit on front or hind for more hoof sizes; reducing the need for more inventory. The frog plate is tapered for heel fit, reducing the need for trimming or grinding pads or heels of shoes. The open toe design minimizes trapping of foreign materials in the front half of the foot. High quality injection molded material allows for resets. Available in Flat and Degree. The Full Plexus pads are a hybrid design, size S-M, to minimize the number of sizes you need to carry. The one size will easily fit shoe sizes 00 through 3. High quality injection molded material allows for resets. Available in Flat and Degree.



FOOTPRO™ DIM IMPRESSION MATERIAL

A non-toxic, non-allergenic, dental grade silicone that is hand mixed to a moldable consistency and applied to the bottom of the equine foot with a pad to provide either a soft cushion (DIM20), or a firm supportive material (DIM40).

FOOTPRO™ CAST

FootPro™ Cast is a resin impregnated fiberglass mesh casting material that is an affordable and user-friendly option for the treatment of hoof problems where support and protection are needed. FootPro Cast provides protection from wear, helps strengthen and stabilize the hoof capsule and is excellent for therapeutic applications. It is wrapped dry with the help of adhesive holding the first layer, then wetted to activate the resin and cure it.



Meader Supply
23 Meaderboro Road
Rochester, NH 03867
www.meadersupply.com

MARK YOUR CALENDAR *for the*

MEADER SUPPLY FARRIER CLINIC

APRIL 26, 2025
WITH AUSTIN EDENS, CJF

SPONSORED BY



Check out FPD's New and Featured Products
www.farrierproducts.com/newandfeatured

